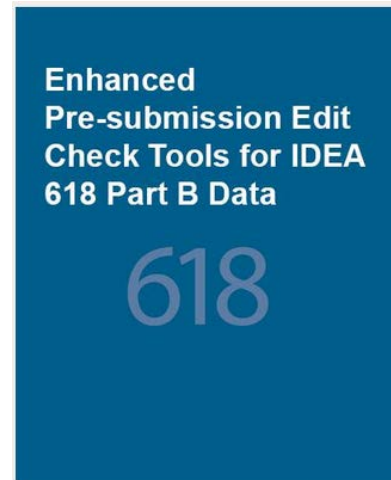


What to Know About Discipline Data Quality IDC Resources

Enhanced Pre-submission Edit Check Tools for IDEA 618 Part B Data

<https://www.ideadata.org/resources/resource/1578/enhanced-pre-submission-edit-check-tools-for-idea-618-part-b-data>

IDC presents the *Enhanced Pre-submission Edit Check Tools for IDEA 618 Part B Data* to help states prepare their Part B data submissions. Five resources comprise this suite of tools: *Enhanced Pre-submission Edit Check Tool for IDEA 618 Part B Personnel Data*, *Enhanced Pre-submission Edit Check Tool for IDEA 618 Part B Exiting Data*, *Enhanced Pre-submission Edit Check Tool for IDEA 618 Part B Discipline Data*, *Enhanced Pre-submission Edit Check Tool for IDEA 618 Part B Ages 3–5 Child Count and Educational Environment Data*, and *Enhanced Pre-submission Edit Check Tool for IDEA 618 Part B) Ages 6–21 Child Count and Educational Environment Data*. States can use these tools to review the contents of their IDEA 618 EDFacts Part B Personnel, Exiting, and Discipline data files and their Child Count and Educational Environment data for children ages 3–5 and students ages 6–21 prior to submission to the EDFacts Submission System, or ESS. The tools apply edit checks and identify potential errors in subtotals or totals in the data files. In addition, the tools provide user-friendly summaries of the 618 data. The tools are enhanced versions of the *618 Data Pre-submission Edit Check Tools* for Personnel, Exiting, Discipline, and Child Count and Educational Environment data. The main difference is the enhanced edit check tools require states to directly copy and paste the EDFacts data files they will submit to ESS as opposed to manually entering data into an Excel file in a format that is different than the one required for submission to ESS.



IDEA Part B Discipline Data Collection Questions and Answers

<https://www.ideadata.org/resources/resource/1579/idea-part-b-discipline-data-collection-questions-and-answers>

The purpose of this document is to assist states with the collection of data on children with disabilities served under IDEA who were subject to disciplinary removal. States can use this document to supplement the instructions provided in the EDFacts file specifications for the EDFacts files they use to report IDEA disciplinary removal.



What to Know About Discipline Data Quality IDC Resources

***Spreadsheet Application for Calculating Disproportionality Measures and User's Guide:
Spreadsheet Application for Calculating Disproportionality Measures (Revised)***
<https://www.ideadata.org/resources/resource/1484/spreadsheet-application-for-calculating-disproportionality-measures-and>

The Excel spreadsheet application and user's guide are tools to aid states in their assessment of racial/ethnic disproportionality. The spreadsheet application calculates several disproportionality measures, including risk, risk ratio, weighted risk ratio, alternate risk ratio, risk difference, composition, difference in composition, relative difference in composition, the E-formula, and variations of several of these measures for total disciplinary removals. The user's guide includes an overview of the spreadsheet application; discussions on data requirements such as data formats, district identifiers, missing data, and state totals; and instructions for using the spreadsheet application, including opening the spreadsheet application, entering data, running the spreadsheet, and reviewing results. The final section of the user's guide addresses how to handle questions or problems.

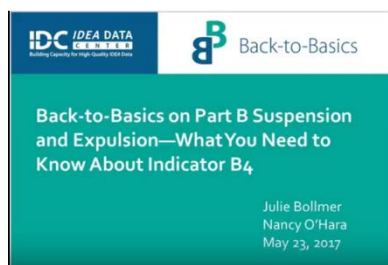


IDC's technical assistance (TA) document, *Methods for Assessing Racial/Ethnic Disproportionality in Special Education: A Technical Assistance Guide (Revised)* provides more information about the measures calculated by the spreadsheet, including step-by-step instructions on how to calculate the measures discussions of how to interpret each, and considerations.

Back-to-Basics on Part B Suspension and Expulsion—What You Need to Know About Indicator B4

<https://www.ideadata.org/events/event/1600/back-to-basics-on-part-b-suspension-and-expulsion-what-you-need-to-know-about>

This webinar launched IDC's Back-to-Basics Webinar Series for new Part B state staff, staff with new indicator responsibilities, and those who wanted a refresher on the ins and outs of the State



Performance Plan/Annual Performance Report (SPP/APR) indicators and related Section 618 data collections. The webinar focused on beginning-level information on Indicator B4 (Suspensions and Expulsions), including a review of B4's specific criteria and data sources; steps and calculations required to collect, analyze, and report Indicator B4 data; and any differences or similarities between Indicator B4 and the other indicators.

Expected outcomes for this webinar were that the participants would have a better understanding of Indicator B4 requirements to ensure high-quality data for SPP/APR reporting and increased knowledge about available resources and supports for understanding and reporting Indicator B4 data.

What to Know About Discipline Data Quality IDC Resources

Success Gaps Toolkit

<https://www.ideadata.org/resources/resource/1538/success-gaps-toolkit>

The *Success Gaps Toolkit* supports use of the [Equity, Inclusion, and Opportunity: Addressing Success Gaps, White Paper](#) and [Equity, Inclusion, and Opportunity: Addressing Success Gaps, Indicators of Success Rubric](#). The toolkit also includes many other materials and resources to assist a school or district in conducting a root cause analysis and making a plan for reducing success gaps. Materials included are

- videos that define and give examples of success gaps;
- customizable process and meeting agendas;
- customizable presentation shell for each meeting; and
- other support materials such as improvement planning forms, meeting evaluation forms, reading materials to use with teams, and other success gaps presentations or stories.



The Success Gaps materials were developed for schools and districts to use if they were identified through their state's accountability system as a school or district in need of improvement, as low performing, or as having a gap in performance or achievement that needs to be addressed. Districts can use the tools to take a closer look at their educational system to prevent "success gaps" and ensure equitable education for all students. A state can use the materials with a district to identify success gaps and their causes within the LEA. Some states will use the materials as part of their work with districts that are underperforming academically, have school climate challenges, or have identified disproportionality.

What to Know About Discipline Data Quality IDC Resources

Measuring Significant Discrepancy: An Indicator B4 Technical Assistance Guide

<https://www.ideadata.org/resources/resource/139/measuring-significant-discrepancy-an-indicator-b4-technical-assistance-guide>

The TA guide describes the methods a state might use to appropriately determine which of its districts has a significant discrepancy (including a significant discrepancy by race or ethnicity) in the rates of out-of-school suspensions and expulsions totaling greater than 10 days for children with disabilities.



After presenting a set of six basic rates, the guide presents a series of methods for determining significant discrepancy, giving a step-by-step example of the use of each method. For each method, the guide includes the question that the method answers, how to interpret its results, and related considerations. Before outlining and discussing the rates and methods, the guide identifies three factors that states must consider: minimum cell size requirements, racial/ethnic reporting categories, and the differences between the reporting requirements for B4B and significant disproportionality. Part B data managers and Part B coordinators are the primary target audiences for the guide.

EDFacts IDEA Discipline Data Infographic

<https://www.ideadata.org/resources/resource/1498/edfacts-idea-discipline-data-infographic>

IDC's *EDFacts IDEA Discipline Data Infographic* provides basic information about the EDFacts files used to submit IDEA discipline data to the U.S. Department of Education. The interactive infographic is intended as a resource that consolidates information available in the six separate IDEA discipline EDFacts file specification documents. The infographic outlines details about discipline data for children with disabilities ages 3 through 21 that must be included in the annual submission of EDFacts files. Data reported in these files include counts of children with disabilities with in-school and out-of-school suspensions and expulsions, length of and reason for disciplinary removal, and count of disciplinary removals due to drugs, weapons, and serious bodily injury. Data in these EDFacts files are the same as the discipline data for children with disabilities previously reported in OSEP Table 5.

